

***Interface Cable
USB Driver
Installation Manual***

1 Introduction

1-1 Purpose

This manual explains how to install the interface cable USB driver.

1-2 Environment of use

OS: Windows 7 or XP US edition, Japanese language edition

USB connector: Type A

2 Installation Procedure

2-1 Before installation

Installation of the USB driver is required when connecting the interface cable to your computer for the first time. Connection to the ECU is not required when installing the driver.

* There are two installation methods.

- (1) Install from the CD.
- (2) If you cannot use the CD when you connect the interface cable for the first time, copy the driver files from the CD onto the computer and then specify the driver files to install them.
The driver files are in the "KITUSB_CDM 20828" folder on the CD. Copy the whole folder onto the computer.

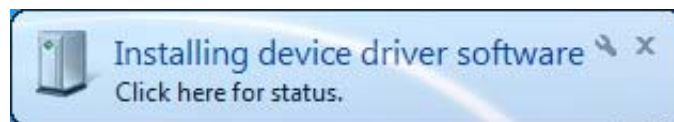
* The appearance of screens may differ depending the type of PC in use.

2-2 Installation Procedure

Follow the procedure below to install the drivers for "USB KIT IF Cable" and "USB Serial Port".

2-2-1 Connect the KIT I/F cable to the USB port of the computer.

The following message appears in the task bar when the first time the cable is connected to the PC.

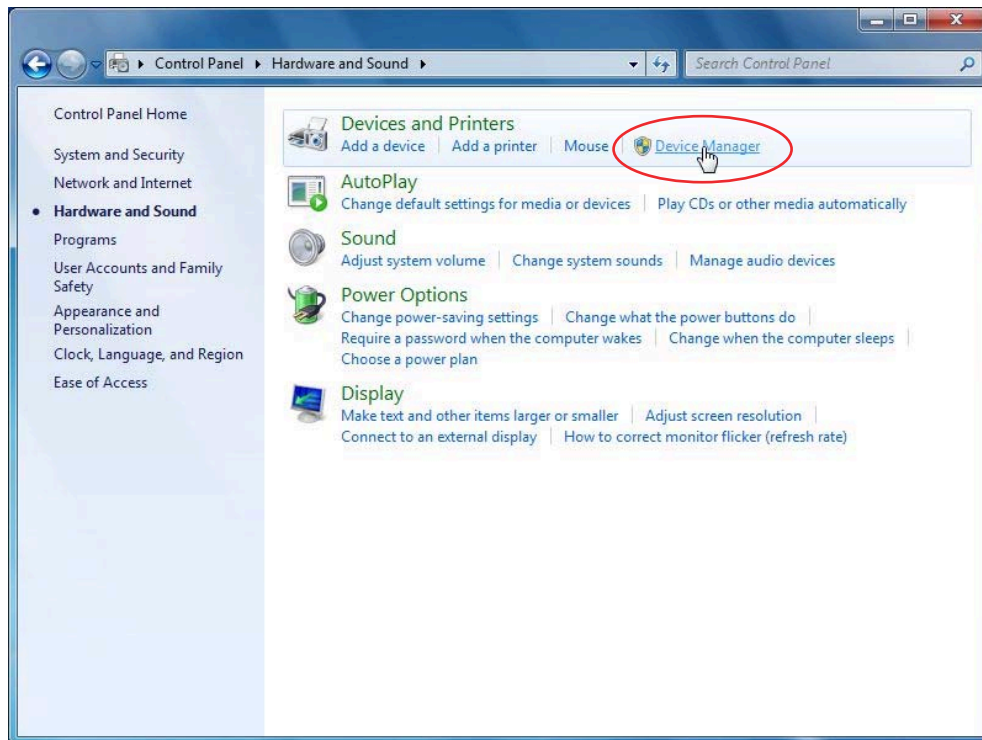


After a few seconds, the message changes as follows.

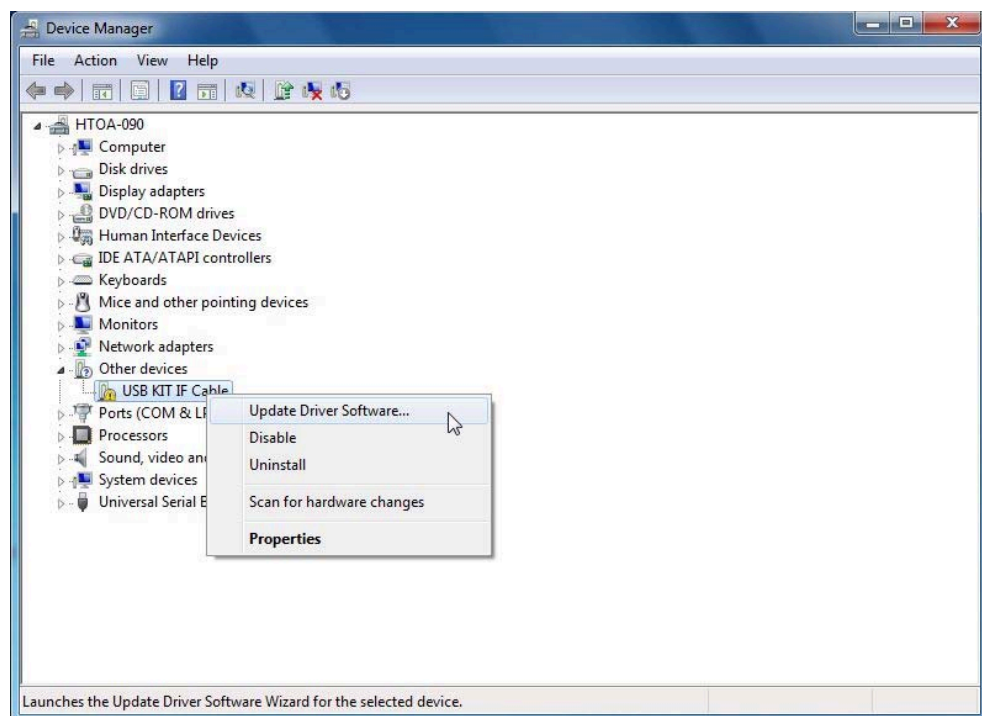


After a while, the message disappears.

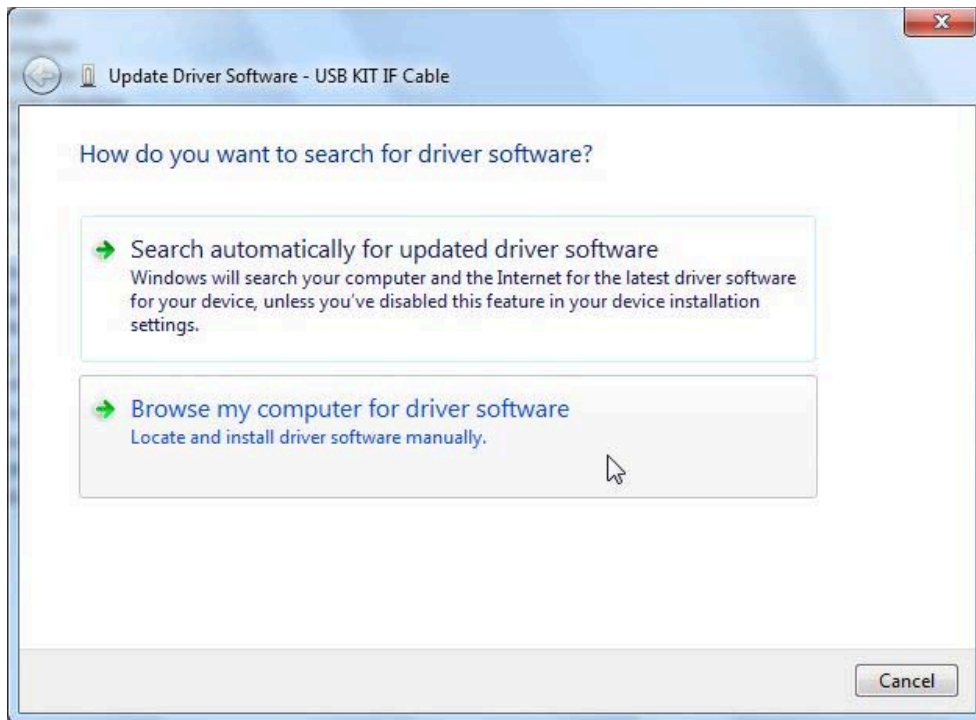
2-2-2 In “Control Panel”, open “Device Manager”.



Right click “USB KIT IF Cable” and select “Update Driver Software” as follows.



2-2-3 In the “How do you want to search for driver software?” screen, select “Browse my computer for driver software”.



2-2-4 Select the folder where the driver file is saved.

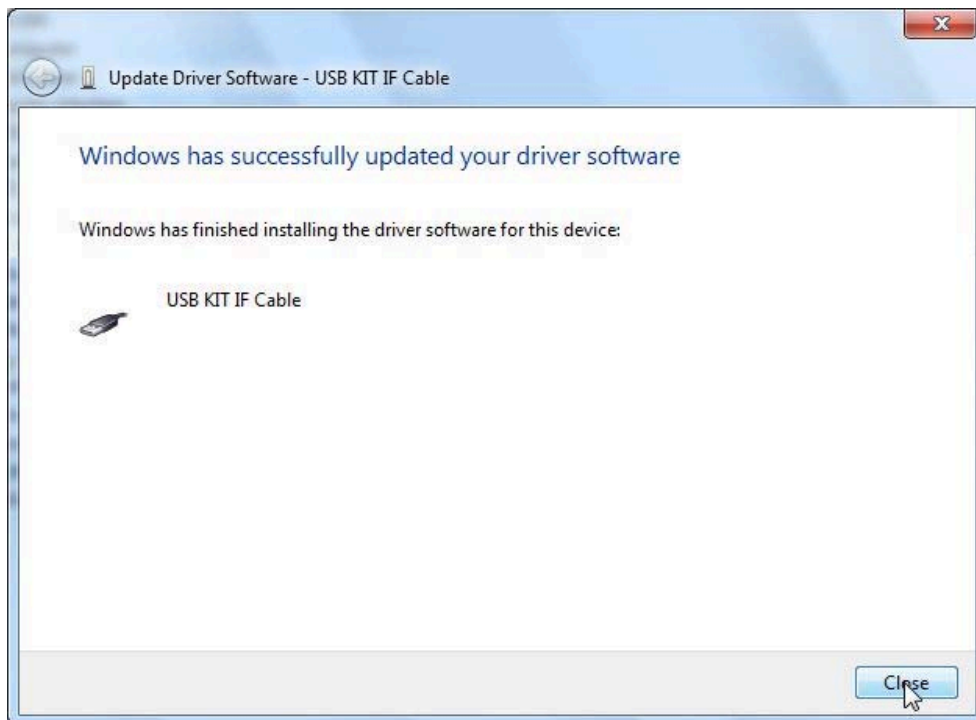
The following is an example when you have saved the driver file to the desktop. After specifying the folder, click “Next”.



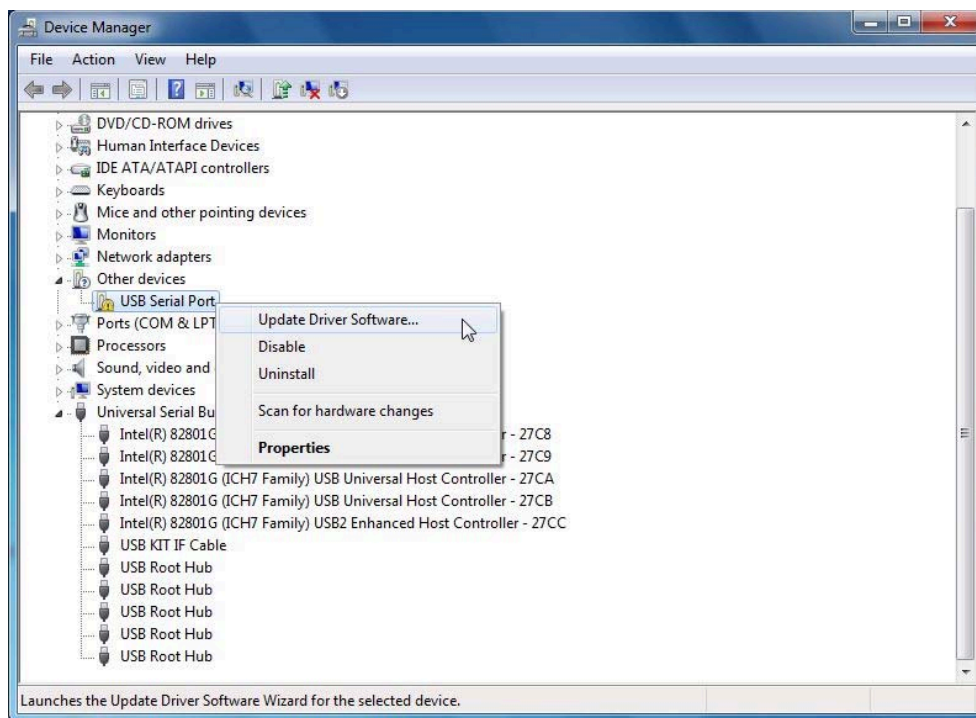
2-2-5 The installation screen appears and Windows Security is displayed.
Select “Install this driver software anyway”.



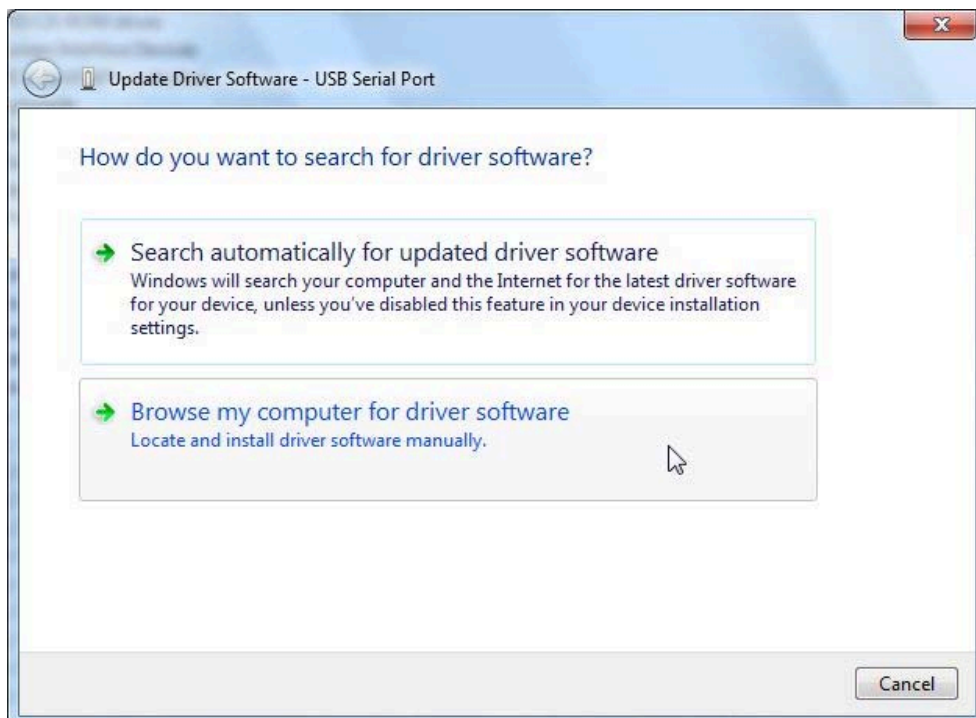
2-2-6 Installation starts and the installation completion screen appears after a while.
In the installation completion screen, click “Close”.
The message in step 1 also appears in the task bar, but automatically disappears in a while.



2-2-7 In “Device Manager”, “USB Serial Port” is added to “Other devices”.
Right click “USB Serial Port” and select “Update Driver Software”.



2-2-8 In the “How do you want to search for driver software?” screen, select “Browse my computer for driver software” same as step 3.



2-2-9 Select the folder where the driver file is saved. Select the same folder you specified in step 4 and click “Next”.



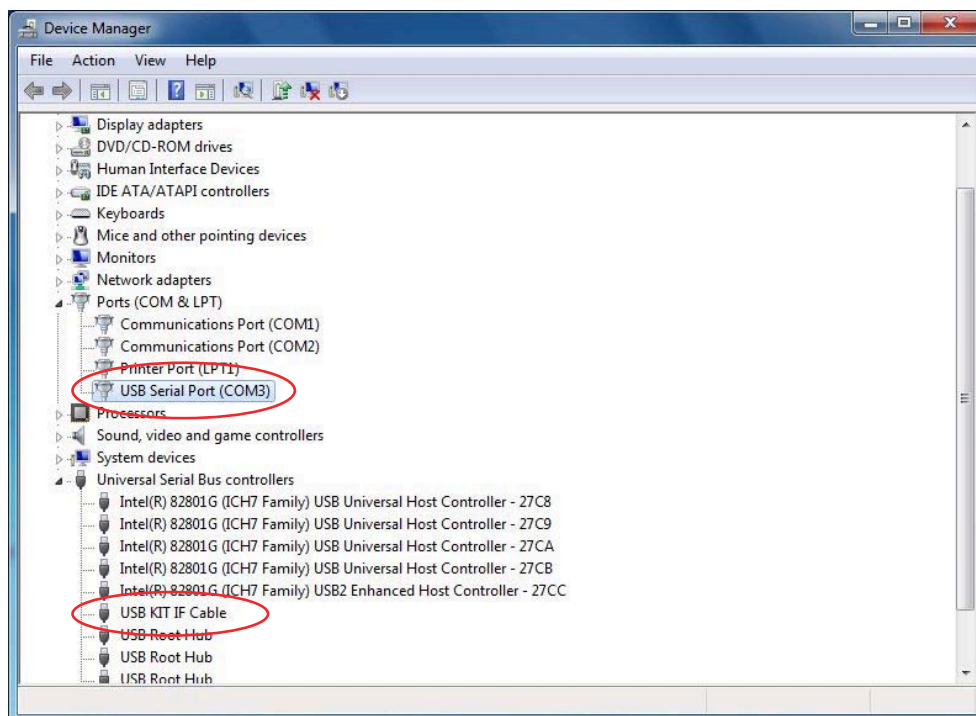
2-2-10 The installation screen appears and Windows Security is displayed. Select “Install this driver software anyway”.



2-2-11 Installation starts and the installation completion screen appears after a while.
In the installation completion screen, click “Close”.



2-2-12 Open the Device Manager. If “USB Serial Port” is added to “Ports (COM & LPT)” and “USB KIT IF Cable” is added to “Universal Serial Bus controllers” as follows, all installation is complete.



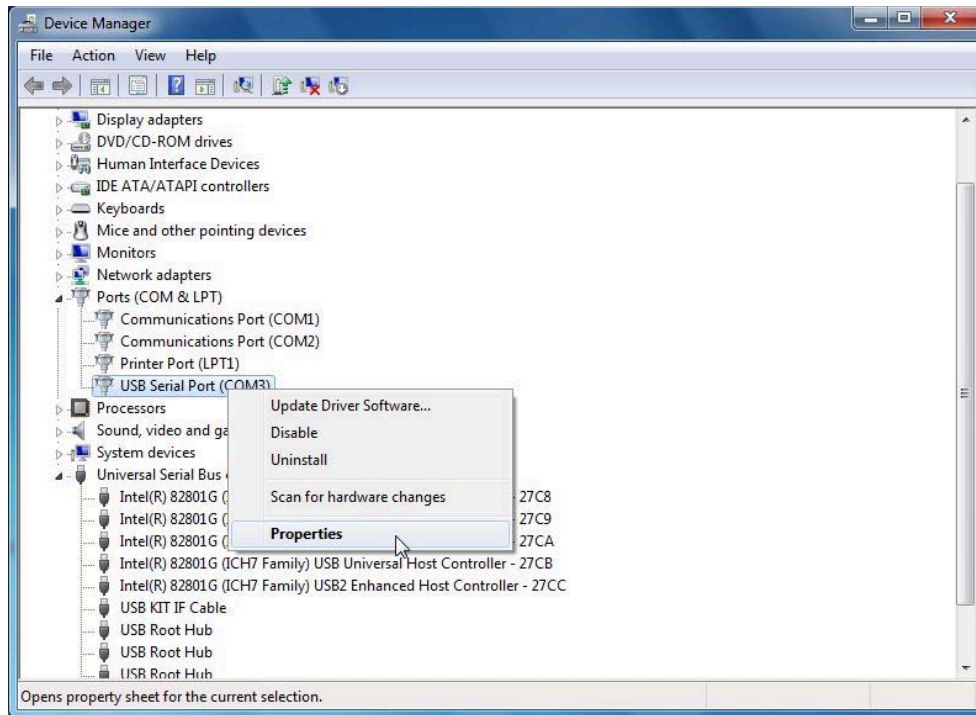
3 How to Change the COM Port

When two or more devices using serial ports are installed on a computer, the COM ports increase. (COM4, 5, 6...)

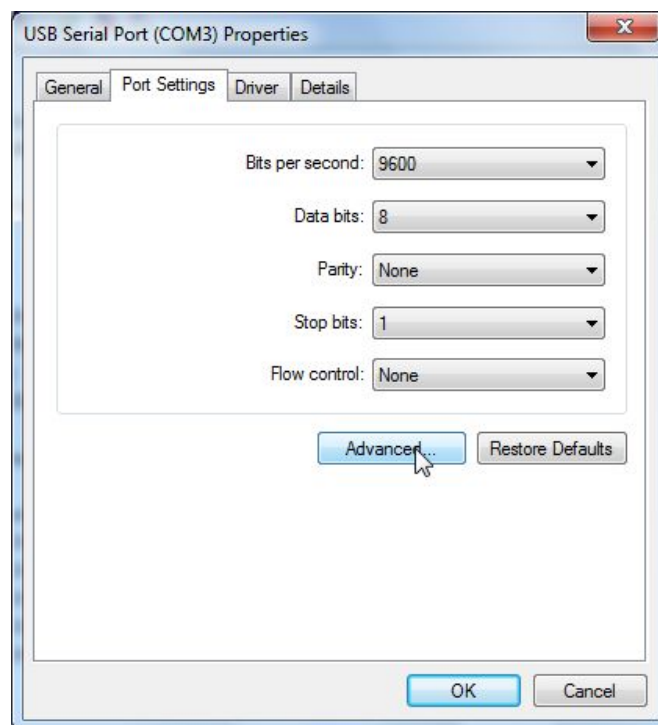
In case you cannot select a COM number (such as COM6), change it with a device manager.

3-1 Changing procedure

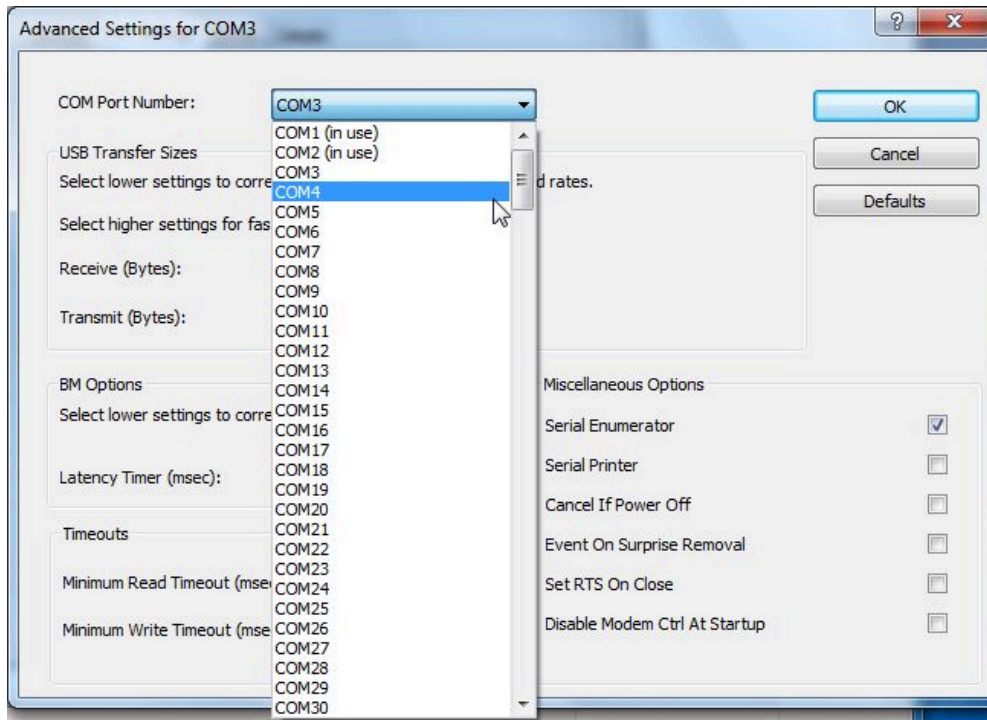
3-1-1 Select the desired serial port and right click to open "Properties".



3-1-2 Select "Port Settings" and click "Advanced".



3-1-3 Select the desired COM port in “COM Port Number” and click “OK”.



Close the Device Manager and reopen it. The COM number is now changed.

CAUTION:

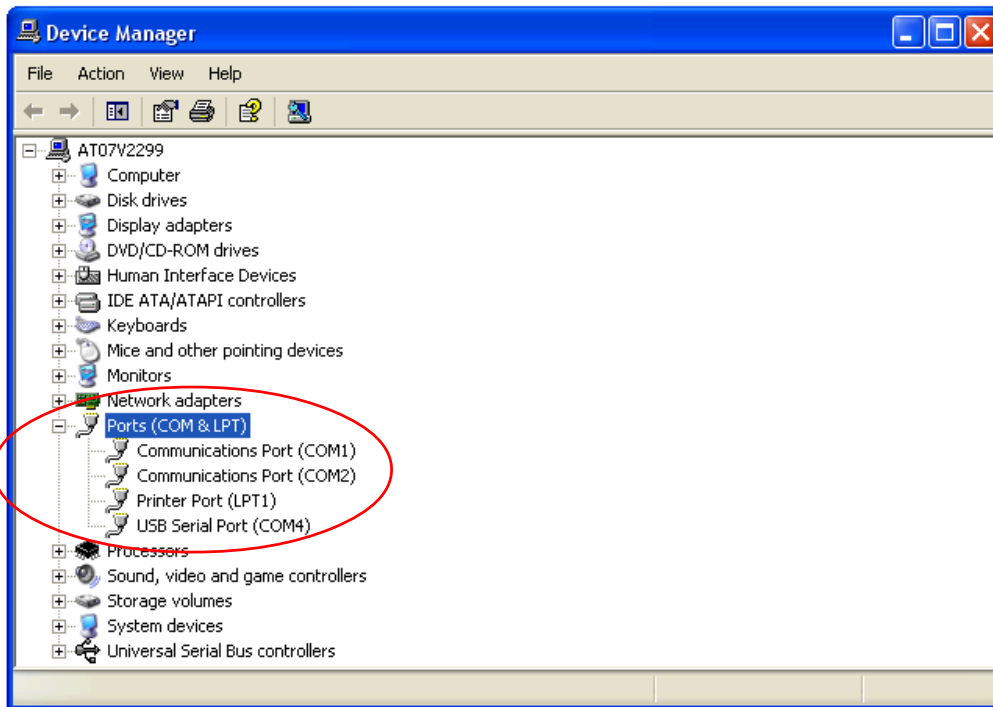
In the above screen, some COM numbers may be marked “in use”.

These are COM numbers that have been registered once to another device.

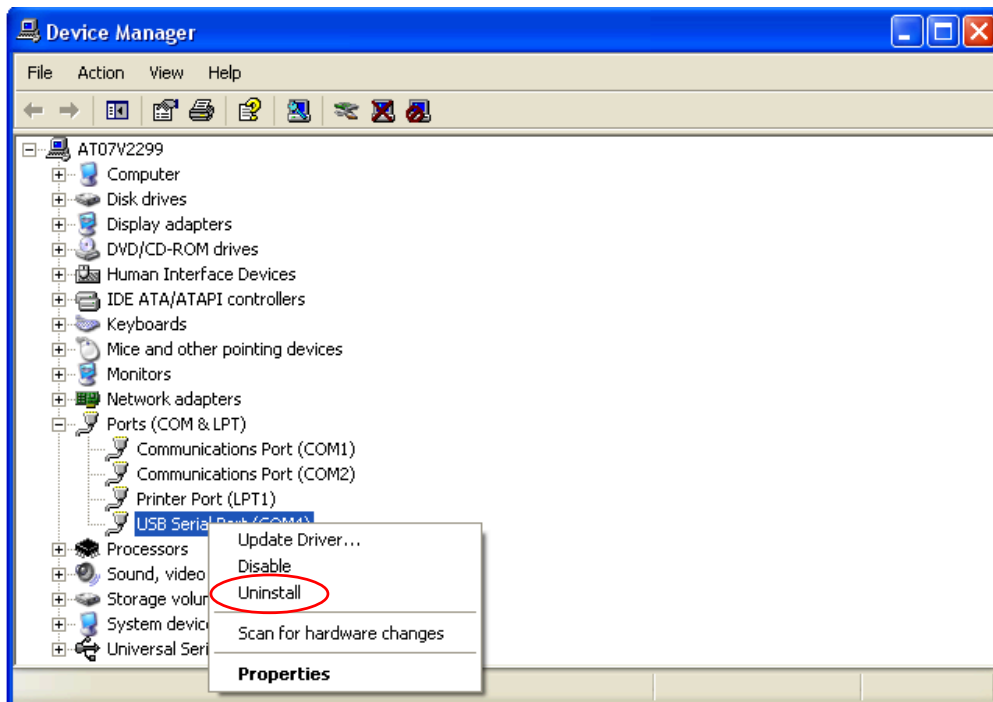
Selecting on of them now will write over the existing setting, so you may have to reset the original device when you next use it.

4 Uninstallation Procedure

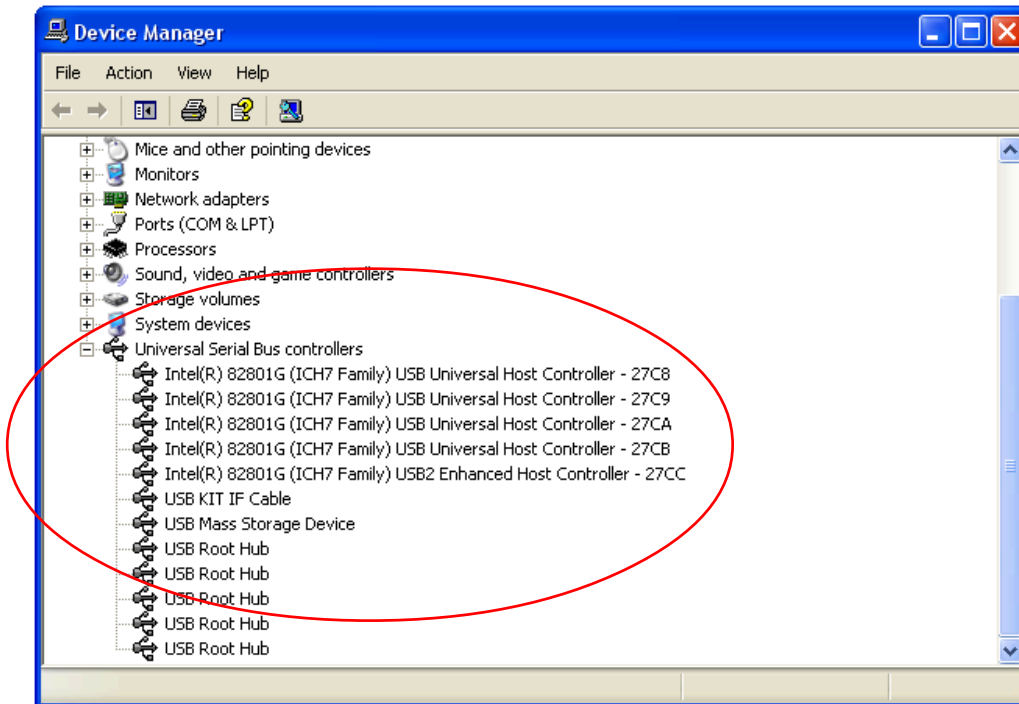
- 4-1 Connect the interface cable.
- 4-2 Open "Device Manager".
- 4-3 Open "Ports (COM & LPT)".



- 4-4 Select the desired serial port and right click.
- 4-5 Click "Uninstall".

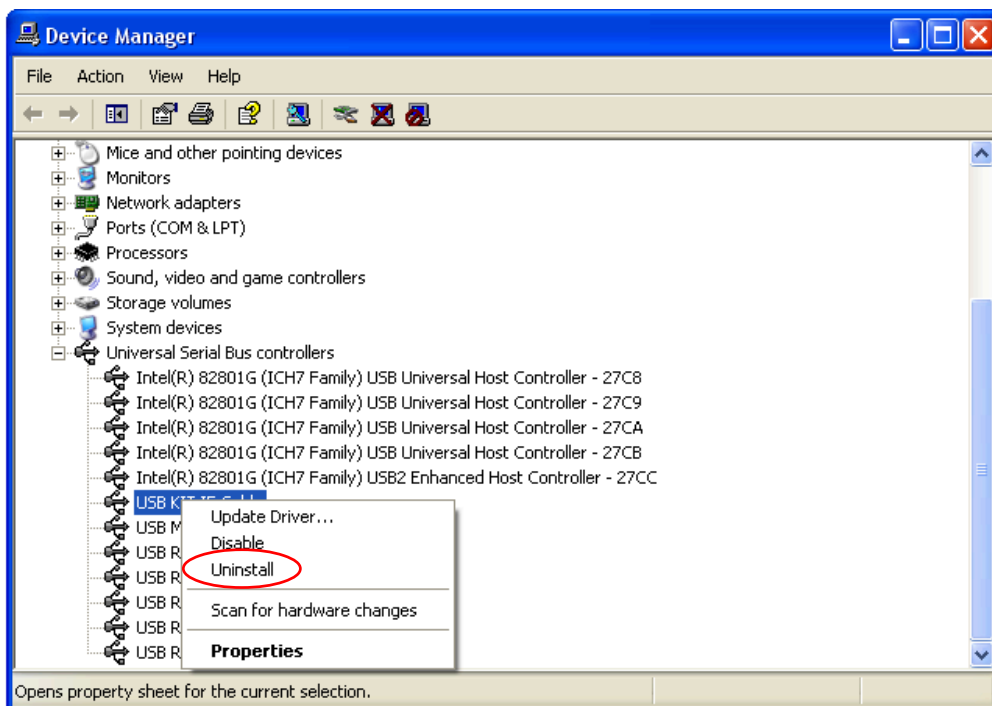


4-6 Open “USB Controller”.



4-7 Select “USB KIT IF Cable” and right click.

4-8 Click “Uninstall”.



***If reinstalling the driver, you must first uninstall it.**

